



Food Loss and Waste Monitoring & Evaluation Unit FLW M&E Unit



Unit Profile

Food losses and waste Monitoring & Evaluation Unit (FLW M&E Unit) is a central body to improve the collection, transparency, analysis, availability and dissemination of data on FLW along all stages of the food value chain to help decision makers design policies, strategies and programs for FLW reduction from farmers to retail markets. Established by the Ministerial decree No. 456/2018, FLW M&E, is to provide a platform for all stakeholders to work together in a coordinated way to reduce FLW that occur in the food systems to improve the state of food security and nutrition in Egypt. With this **Vision** in mind, **Our Mission** is to catalyze and promote a common understanding of the nature and scope of FLW through adapting improved food loss assessment methodologies and establishing a national partnership and alliance of public and private sector organizations with commitment towards reducing FLW and strengthening food security.

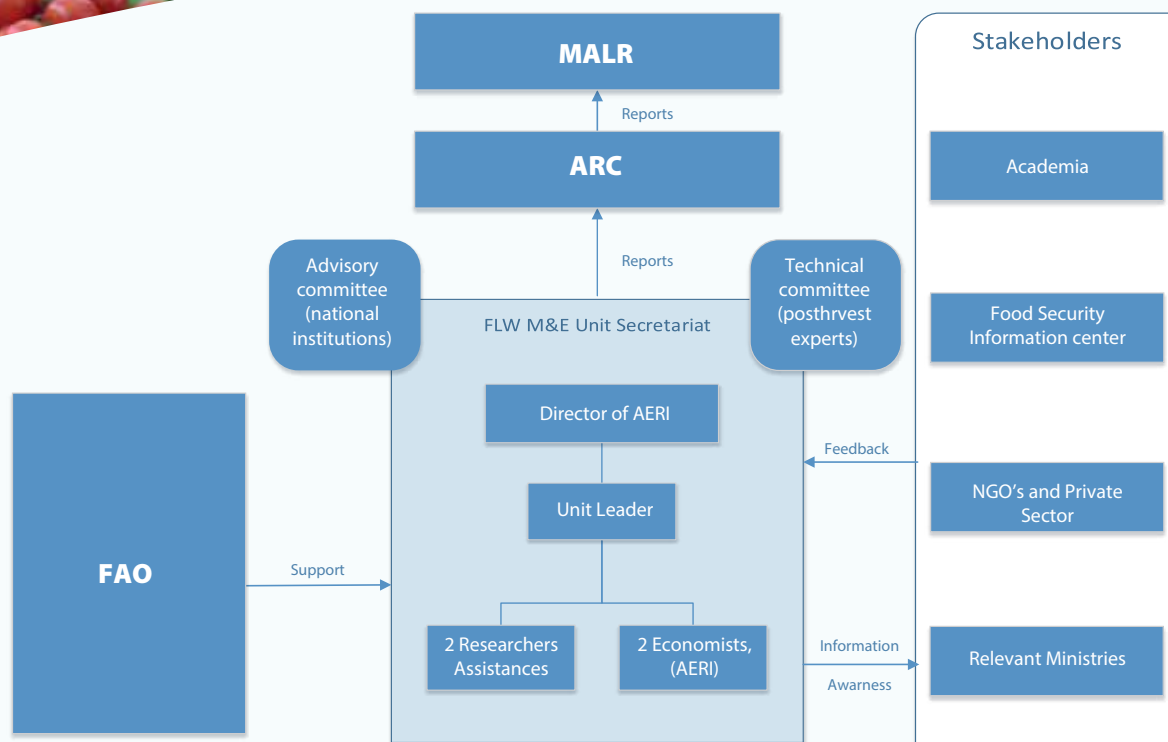
The Structure of FLW M&E Unit has been designed to Make a platform available for FLW as a part of existing data and information in the agricultural sector in Egypt; and to cooperate and mobilize technical experts and field staff at the level of decision makers from ARC and relevant institutions, as needed, for the evaluation, assessment and analysis of technical, economic and social issues related to FLW to achieve the desired goals. **FLW M&E Unit Secretariat consists of:** the Head of the unit and 4 economic Researchers.

Under the supervision of the Head of Agricultural Research Center (ARC) and direct supervision of Agricultural Economics Research Institute (AERI), the FLW M&E Unit supports data and information collection, conducting analytical research and knowledge dissemination about FLW in Egypt. The FLW M&E team works in close collaboration with other stakeholders (technical experts, relevant entities...etc.) to establish a FLW Platform in Egypt.

The secretariat of FLW M&E Unit is supported by the Food and Agricultural Organization of the United Nations (FAO) in the short-term (until March 2019) during the start-up phase to build the required online information hub, and achieve other outputs. In long-term, it will be responsible for achieving and delivering the proposed outputs of the unit. This will be achieved by cooperating and communicating with research institutes, universities, Civil Society Organizations and the private sector.

Stakeholders and Target Beneficiaries include:

- Ministry of Agriculture and Land Reclamation (MALR), Agricultural Research Center (ARC) ;
- Decision Makers;
- Academia;
- Farmers, Traders and Other Value Chain Stakeholders;
- Small Holders and Small & Medium Agro Industries Enterprises (SMEs);
- NGO's and Private Sector;
- Relevant Ministries;
- Donors, Project Owners and Managers.



The **Main Outcome** of FLW M&E Unit is to increase the availability of FLW data and information from different stakeholders' perspective, which leads to developing and supporting effective solutions and policies to FLW reduction in Egypt.

Outputs of FLW M&E Unit include:

1. Review and collate information on the state and magnitude of FLW in different value chains, disseminate information and engage with national stakeholders (periodical reports), and provide access to other networks related to food loss and/or food waste.
2. Supervise, collaborate and/or coordinate nation-wide initiatives on FLW estimation and reduction methods.
3. Methodology leadership: ensuring consistent application and adaptation of methodologies in FLW studies, in coordination with technical institutions.
4. Establish database for FLW.
5. Manage an online information hub.
6. Organize seminars, training and workshops to raise awareness of the importance of applying good practices to achieve FLW reduction.

As for the **Methodology**, since estimates of food losses are rare and suffer from inconsistent methodologies, effort has been placed on improving food loss assessment methodology in recent years for more consistency and comparability of results, notably with SDG 12 Target 12.3 as a driving force for better monitoring. In this regard, FAO Technical Platform on Measurement and Reduction of FLW provides a list of the main tools used by international organizations, which FLW M&E unit intends to benefit from to achieve its goals:

- Agenda 2030 and the Global Food Loss Index Global Food Loss Index (GFLI)
- Global Strategy to Improve Agricultural and Rural Statistics (GSARS) GSARS
- Food loss case study methodology (<http://www.fao.org/save-food/resources/casestudies/en/>)
- Food Loss and Waste Protocol and Standard (FLW Protocol)
- African Postharvest Losses Information System (APHLIS)

Contact Information

Address: Nadi El-Said Street, No. 7, 4th Floor, Dokki, Giza, Egypt

Phone : (202) 33372318

Fax : (202) 37607651

Email : flwmeunit_aeri@sci.eg
flwmeunit@gmail.com

Website : www.flwme-aeri.sci.eg